

## Equipment

Designation	Bare pump	Wall mounted	Trolley assembly	Air regulator	Suction hose 600mm	Suction hose 1000mm	Gravity hopper	Output filter	Part number
PUMP AZUR™ 72C160 W/M SST PE/PTFE SUC200L AIR FILT	-	♦	-	♦	-	♦	-	♦	64350160135111
PUMP AZUR™ 72C160 MOB SST PE/PTFE SUC 30L AIR FILT	-	-	♦	♦	♦	-	-	♦	64350160131115
PUMP AZUR™ 72C160 W/M SST PE/PTFE SUC 30L AIR FILT	-	♦	-	♦	♦	-	-	♦	64350160131111
PUMP AZUR™ 72C160 SST PE/PTFE W/O FIL	♦	-	-	-	-	-	-	-	64350160130000
PUMP AZUR™ 72C160 W/M SST PE/PTFE SUC 30L AIR W/O FIL	-	♦	-	♦	♦	-	-	-	64350160131101
PUMP AZUR™ 72C160 MOB SST PE/PTFE HOP AIR FILT	-	-	♦	♦	-	-	♦	♦	64350160134115

## Accessories

Designation	Part number
TIPTOP AIRLESS® REVERSIBLE TIP CALIBER XX.XX	00040XXXX
POLYAMIDE 500B HOSE RANGE WITH NPSM FITTINGS	050500X0X
MAGMA HEATER RANGE	1561600XX
PTFE 500B HOSE RANGE WITH NPSM FITTINGS	050500X5X
KIT 2ND GUN (SFLOW™, HOSE, WHIP AND FITTINGS)	151590016

## Kits

Designation	Trolley assembly	Air regulator	Suction hose 600mm	Gravity hopper	Output filter	SFlow 470B - 519 Tip Top	Hose 16m + 1.6m	Part number
PACK AZUR™ 72C160 SST MOB HOP FILT 15+1.6M+SFLOW	♦	♦	-	♦	♦	♦	♦	3721603411525
PACK AZUR™ 72C160 SST MOB SUC 30L FILT 15+1.6M+SFLOW	♦	♦	♦	-	♦	♦	♦	3721603111525
PACK AZUR™ 72C160 SST MOB SUC 30L PRIM 15+1.6M+SFLOW	♦	♦	♦	-	-	♦	♦	3721603171525

## Spare Parts

Designation	Part number
AIR MOTOR 7000 SEAL KIT	146371040
POLYVALENT SEAL KIT (03) FOR C160 - PE + PTFE	144050413
SEAL KIT (04) FOR C160 - PE + LEATHER	144050414
MAINTENANCE KIT C160 HYDRAULIC SECTION	144050160
SEAL KIT (05) FOR C160 - PE + PTFE G	144050415

## Azur™ 72C160

Airless Paint Pump

Airless / Pumps



## ADDICTED TO WORK

- High finishing protective coatings applications
- Designed to operate well in harsh and intensive environments
- Simple maintenance and comfortable to use

## Markets





# Azur™ 72C160

## Airless Paint Pump

Azur™ range is the recommended line for the protective coatings market. The pump will transfer material without compromising your finish quality whether you are using single component paints, pre-mixed 2K, zinc-rich materials, and other types of coatings.

This Azur™ paint pump range is the best partner to spray protective coatings: Pressure stability, broad suction power, no downtime, and minimal noise pollution. Four patent-pending technologies to protect the quality of your job: No leaks, no freezing, and no stalling.

This pump can work for hours in extreme conditions to let you focus on the job. The pump design allows for quick and easy on-site maintenance. The size of the hydraulic section allows you to work with multiple guns, depending on tip choice.

Tip caliber	Orifice diameter (inc)	Number of gun recommended
Up to 18	Up to 0.019	2
From 25 and above	From 0.021 and above	1

In combination with our SFlow™ spray gun, this solution will ensure the best finish quality while substantially reducing your paint consumption and reducing overspray. Azur™ pump range comes with a choice of (3) different packings to fit most applications: PE / PTFE, PE / Leather, and PE / PTFE G.

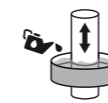


### Technical data table

Designation	Value	Unit: metric (US)
Pressure Ratio	72/1	
Maximum Fluid Pressure	432 (6,265)	bar (psi)
Air Consumption	124	m³/h (cfm)
Sound Level	77.2	dBa
Fluid Output at 20 cycles/mn	3.2 (0.84)	l/mn (gal/mn)
Air Inlet	F 3/4" BSP	
Fluid Outlet	M 3/8 NPSM	
Fluid Inlet	M 1 1/4" G	
Number of Cycles per liter of products	6	
Wetted Shares: Stainless Steel	♦	
Weight	80.3 (177)	kg (lbs)



### Technologies



Cup Lub



2 Ball



Self strained packing technology



VDE air motor technology

## PERFORMANCE

- 1 Constant performance whatever the weather conditions: potential icing, high humidity, and extreme temperatures
- 2 Fast pump changeover design to eliminate pulsation during spraying
- 3 SST hydraulic section as standard (not carbon steel) compatible with new water-based coatings
- 3 Minimal dead zones: Efficient and fast flushing (ideal for hot-potted 2K materials)

## PRODUCTIVITY

- 4 Large 2in suction hose assembly to handle higher viscosities up to 30,000 cps (optional)
- 5 Minimum downtime with quick hydraulic and foot valve knockdown and easy access to upper sealing
- 6 Protected lubrication cup to prevent material contamination
- 7 Storage compartment for convenient and easy access to accessories
- 8 Easy to operate convenient gravity hopper (optional)

## SUSTAINABILITY

- 1 Reduced noise pollution due to an enhanced air motor exhaust / muffler design
  - 9 Innovative throat packing design with self-adjusting V-packing seals for longer life (no manual packing gland adjustment required)
- ♦ Designed with fewer components for less inventory and user-friendly maintenance.



### Description

