

Equipment

Designation	Setup	Fluid inlet	Suction rod	Drain rod	Paint filter	Air regulator	Upper Seal	Lower seal	Part number
AIRMIX PUMP 20C100 BARE	bare	F 1/2 BSP	-	-	-	0	Chevron	GT	151780000
AIRMIX PUMP 20C100 W/M W/O FILTER WITH SUCTION ROD	wall	M 26x125	Ø23	-	-	2	Chevron	GT	151780100
AIRMIX PUMP 20C100 W/M WITH FILTER AND RODS	wall	M 26x125	Ø23	♦	♦	2	Chevron	GT	151780200
AIRMIX PUMP 20C100 TURBO W/M W/O FILTER W/O SUCTION	wall-Turbo	M 26x125	-	-	-	2	Chevron	GT	151782100
AIRMIX PUMP 20C100 TURBO W/M FILTER WITH RODS	wall-Turbo	M 26x125	Ø23	♦	♦	2	Chevron	GT	151782200

Accessories

Designation	Part number
Two Post Cart w/o plate	051221000
Pump Mounting Plate with straps	056100199
Stainless steel Suction rod Ø23 M26 plunging tube length elbowed 570 mm	149596150
Stainless steel Suction rod Ø23 M26 plunging tube length 1000mm elbowed (for 200 liters drums)	149596160
Stainless steel drain rod Ø16 elbowed F18 x 125	049596000
Fluid filter 3/8 Mesh 6	155580300

Spare Parts

Designation	Part number
Seal kit for 1000-4 air motor including reversing-block seals	146270991
Full maintenance kit for 1000-4 air motor including reversing-block seals	146270995
Seal kit for C100 hydraulic section (Chevron/GT)	144960091
Full maintenance kit C100 hydraulic section (Chevron/GT)	144960096
Seal kit for C100 hydraulic section (Chevron/Chevron)	144960090
Full maintenance kit C100 hydraulic section (Chevron/Chevron)	144960095
Upper packing with GT seal	144960100
Chevron seal, PE	909051105
Servicing kit PU	144960159
Ball Ø 16, 316L stainless steel	907414142
Ball Ø 9.52, 304L stainless steel	907414123

20C100

Airmix® Paint Pump

Airmix® / Pumps



- Used for circulation and/or multiple guns.
- Heavy duty air changeover valves.
- Large chemical compatibility with multiple seals material choices (Chevron, GT, PU).

Markets





20C100

Airmix® Paint Pump

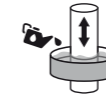
The 20C100 Airmix® pump is designed to pump large quantities of medium viscosity products. Turbo version prevents ice build-up on continuous operations.



Technologies



GT Sealing



Cup Lub



2 Ball

PERFORMANCE:

- ◆ Economical with low air consumption
- ◆ Quiet air motor to preserve work environment

PRODUCTIVITY:

- ◆ Construction without dead zones for quick flushing & product changes
- ◆ The mobile seal located on the piston ensures the mechanical cleaning of the fluid section internal wall during pump runs
- ◆ Lower mobile single lip packing (GT) reducing friction for improved efficiency

SUSTAINABILITY:

- ◆ Fewer parts & simple design for extended lifetime
- ◆ Polyfluid and PTFE graphite seal for improved wear resistance
- ◆ Triple chrome layer piston for exceptional durability



Description

Our wide selection of accessories allows you to create various configurations to meet your customer requirements.



Technical data table

Designation	Value	Unit: metric (US)
Pressure Ratio	20/1	
Maximum Fluid Pressure	120 (1740)	bar (psi)
Maximum Temperature	60 (140)	°C (°F)
Cylinder	100	cc (oz)
Sound Level	78	dBa
Fluid Output at 30 cycles/mn	3 (0.8)	l/min (gal/mn)
Fluid Volume per Cycle	100 (3.4)	cc
Air Consumption at 30 cycles/mn at 4 bar (60 psi)	21.6 (12.7)	m³/h (cfm)
Air Inlet	F 3/8" BSP	
Fluid Outlet	M #5 JIC	
Fluid Inlet	M 26x125	
Number of Cycles per liter of products	10	
Sealing Packing Upper PTFE G - Polyfluid	◆	
Wetted Shares: Stainless Steel	◆	
Weight	22 (48.5)	kg (lbs)