

Equipment

Designation	Version	Fluid inlet	Suction rod	Paint filter	Air regulator	Seal	Part number
30C25 PUMP W/O FILTER W/O SUCTION ROD	Wall	M 26x125	-	-	2	GT	151145000
30C25 PUMP W/O FILTER WITH SUCTION ROD	Wall	M 26x125	16 mm (5/8")	-	2	GT	151145100
30C25 PUMP W/O FILTER, WITH SUCTION ROD DIAM 25	Wall	M 26x125	25 mm (1")	-	2	GT	151145150
30C25 PUMP WITH FILTER & SUCTION ROD DIAM 16	Wall	M 26x125	16 mm (5/8")	♦	2	GT	151145200
30C25 PUMP WITH FILTER & SUCTION ROD DIAM 25	Wall	M 26x125	25 mm (1")	♦	2	GT	151145250
30C25 PUMP W/O FILTER W/O SUCT ROD FLUID INLET F1/2	Wall	F 1/2 BSP	-	-	2	GT	151145320
30C25 PUMP MB-A ASP. M26x125 WO FILTER WO ROD	Wall	M 26x125	-	-	2	MB-A	151145400
30C25 PUMP MB-A ASP. F1/2 WO FILTER WO ROD	Wall	F 1/2 BSP	-	-	2	MB-A	151145450
30C25 PUMP MB-A ASP. M26x125 WO FILTER WITH ROD D16	Wall	M 26x125	16 mm (5/8")	-	2	MB-A	151145550
30C25 PUMP MB-A ASP. M26x125 WO FILTER WITH ROD D25	Wall	M 26x125	25 mm (1")	♦	2	MB-A	151145600
30C25 PUMP MB-A ASP. M26x125 WO FILTER WITH ROD D25	Wall	M 26x125	25 mm (1")	-	2	MB-A	151145650
30C25 PUMP MB-A ASP. M26x125 WITH FILTER WITH ROD D16	Wall	M 26x125	16 mm (5/8")	♦	2	MB-A	151145700

Accessories

Designation	Part number
Wall-mounted totem	151140240
Tripod	151140210
Dismountable trolley	151241000
Stainless Steel Suction rod Ø16 M26 plunging tube length 570 mm elbowed	149596050
Stainless Steel Suction rod Ø16 M26 plunging tube length 1000mm elbowed (for 200 liters drums)	149596060
Stainless steel Suction rod Ø23 M26 plunging tube length elbowed 570 mm	149596150
Stainless steel Suction rod Ø23 M26 plunging tube length 1000mm elbowed (for 200 liters drums)	149596160
Stainless steel drain rod Ø16 elbowed F18 x 125	049596000
Gravity hopper 6 liters	151140230
Fluid filter Mesh 6 3/8 (Inlet F1/2"JIC - Outlet M1/2"JIC)	155580600

Kits

Designation	Maximum output pressure(bar (psi))	Gun type	Tip	Hoses included	Swivel fitting	Mounting	Packing material	Output filter	Suction rod	Part number
W/M PACK AIRMIX® PUMP 30C25 NO FILTER+SUCTION ROD+Xcite®+240B	180 (2610)	Xcite®+240	-	7.5 m (24 ft)	•	Wall	GT	-	Ø 16	151260975
W/M PACK AIRMIX® PUMP 30C25 NO FILTER W/O SUCT ROD+Xcite®+240B	180 (2610)	Xcite®+240	-	7.5 m (24 ft)	•	Wall	GT	-	-	151260977
W/M PACK AIRMIX® PUMP 30C25 & FILTER & SUCTION ROD+Xcite®+240B	180 (2610)	Xcite®+240	-	7.5 m (24 ft)	•	Wall	GT	•	Ø 23	151260978
W/M PACK AIRMIX® PUMP 30C25 NO FILT+SUC ROD+XCITE®+240 NO SWI	180 (2610)	Xcite®+240	-	7.5 m (24 ft)	-	Wall	GT	-	Ø 23	151261002
AIRMIX® PACK W/M 30C25 MBA NO FILT W/O SUC XCITE®+240 SWI H7.5	180 (2610)	Xcite®+240	-	7.5 m (24 ft)	•	Wall	MB-A	-	-	151265008
AIRMIX® PACK W/M 30C25 MBA NO FILT SUC D16 XCITE®+240 SWI H7.5	180 (2610)	Xcite®+240	-	7.5 m (24 ft)	•	Wall	MB-A	-	Ø 16	151265007
AIRMIX® PACK W/M 30C25 MBA NO FILT SUC D25 XCITE®+240 H7.5	180 (2610)	Xcite®+240	-	7.5 m (24 ft)	-	Wall	MB-A	-	Ø 23	151265010
AIRMIX® PACK W/M 30C25 MBA SUC D23 XCITE®+240 SWI H7.5	180 (2610)	Xcite®+240	-	7.5 m (24 ft)	•	Wall	MB-A	-	Ø 23	151265009

Spare Parts

Designation	Part number
Servicing kit for 420-4 air motor	144130190
GT Cartridge kit	144130205
GT cartridge and piston kit	144130289
MB-A Cartridge kit	144130365
MB-A cartridge and piston kit	144130389
Servicing kit C25 fluid section	144130291



13 chemin de Malacher - CS 70086
38243 Meylan Cedex - FRANCE
Phone: +33 (0)4 76 41 60 60 - Fax: +33 (0)4 76 41 60 90
www.sames.com

30C25 Airmix®

Paint Pump

Airmix® / Pumps



PISTON PUMP WITH CUP SEAL FOR MEDIUM VISCOSITY

- Good chemical compatibility with GT or MB-A cartridges
- Suction rod or gravity hopper
- Large range of "ready to spray" kits

Markets



BOND • PROTECT • BEAUTIFY



30C25 Airmix®

Paint Pump

The 30C25 pump is for painting small quantities of medium viscosity products, water or solvent based. Up to 180 bar of fluid pressure to compensate pressure drops

The **30C25 Airmix® paint pump** delivers excellent performance and outstanding benefits because of our proven pumping technology. The 30C25 compact Airmix® paint pump is recommended to handle all types of materials ranging from low to medium viscosity. It comes with an optimized volume fluid section for fast color changes with minimal material loss.

The **30C25 Airmix® paint pump packages** are available in **wall-mount versions** with stand mounting as an option. Packages are available with (1) Airmix® Xcite® 240 manual spray gun and 7.5 m (25ft) air and fluid hoses. A wide variety of options are available to meet all customer requirements.



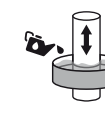
Technical data table

Designation	Value	Unit: metric (US)
Pressure Ratio	30/1	
Maximum Fluid Pressure	180 (2610)	bar (psi)
Maximum Air Pressure	6 (87)	bar (psi)
Air Consumption	7.1 (4.18)	m³/h (cfm)
Maximum Temperature	60 (140)	°C (°F)
Cylinder	25 (0.84)	cc (oz)
Weighted Sound Level	74.9	dBA
Recommended Air Pressure	2 - 5 (29 - 72.5)	bar (psi)
Fluid Output at 30 cycles/mn	0.75 (0.2)	l/min (gal/mn)
Fluid Output at 20 cycles/mn	0.5 (0.13)	l/mn (gal/mn)
Fluid Volume per Cycle	25	cc
Free Flow Rate	1.5 (0.39)	l/mn (gal/mn)
Fluid Output at 15 cycles / mn	0.375 (0.01)	l/mn (gal/mn)
Air Consumption at 30 cycles/mn at 4 bar (60 psi)	7.1	m³/h (cfm)
Displacement Per Cycle	25 (1.52)	cc (cubic inch)
Motor Type	420-4	
Air Inlet	F3/8" BSP / F3/8" BSP	
Fluid Outlet	F3/8" NPS / M1/2" JIC	
Fluid Inlet	F 1/2 " BSP / M26x125	
Hard Chrome Stainless Steel, Wetted Parts	♦	
Number of Cycles per liter of products	40	
Sealing Packing Upper GT cartridge with polyethylene packing	♦	
Height	57.5 (22.6)	cm (in)
Width	32 (12.6)	cm (in)
Depth	17 (6.69)	cm (in)
Wetted Shares: Stainless Steel	♦	
Weight	7.7 (17)	kg (lbs)

sames kremlin



GT Sealing



Cup Lub



2 Ball



Triple Chrome Layer



Technologies



Description

Performance

- 1 Differential air motor keeps paint pump from frosting over
- 1 Priming at very low air pressures (0.6 bar)
- ♦ Constant and pulse-free delivery for superior finish

Productivity

- 1 Quiet air motor
- 2 A closed construction prevents risk of injuries and protects lubricant from external contamination
- 2 Designed to eliminate dead zones and facilitate pump priming and flushing
- 3 Large foot valve to handle medium viscosity materials
- 4 Easy, rotatable outlet fitting for quick maintenance
- 5 Leak monitoring wind hole for fast control

Sustainability

- 1 Air motor (45% spare shares vs competitors for maintenance)
- 2 Ultra coated plunger for less friction and improved abrasion resistance
- 2 Single GT seal to avoid throat packing maintenance and low friction, large lubricant wet cup

